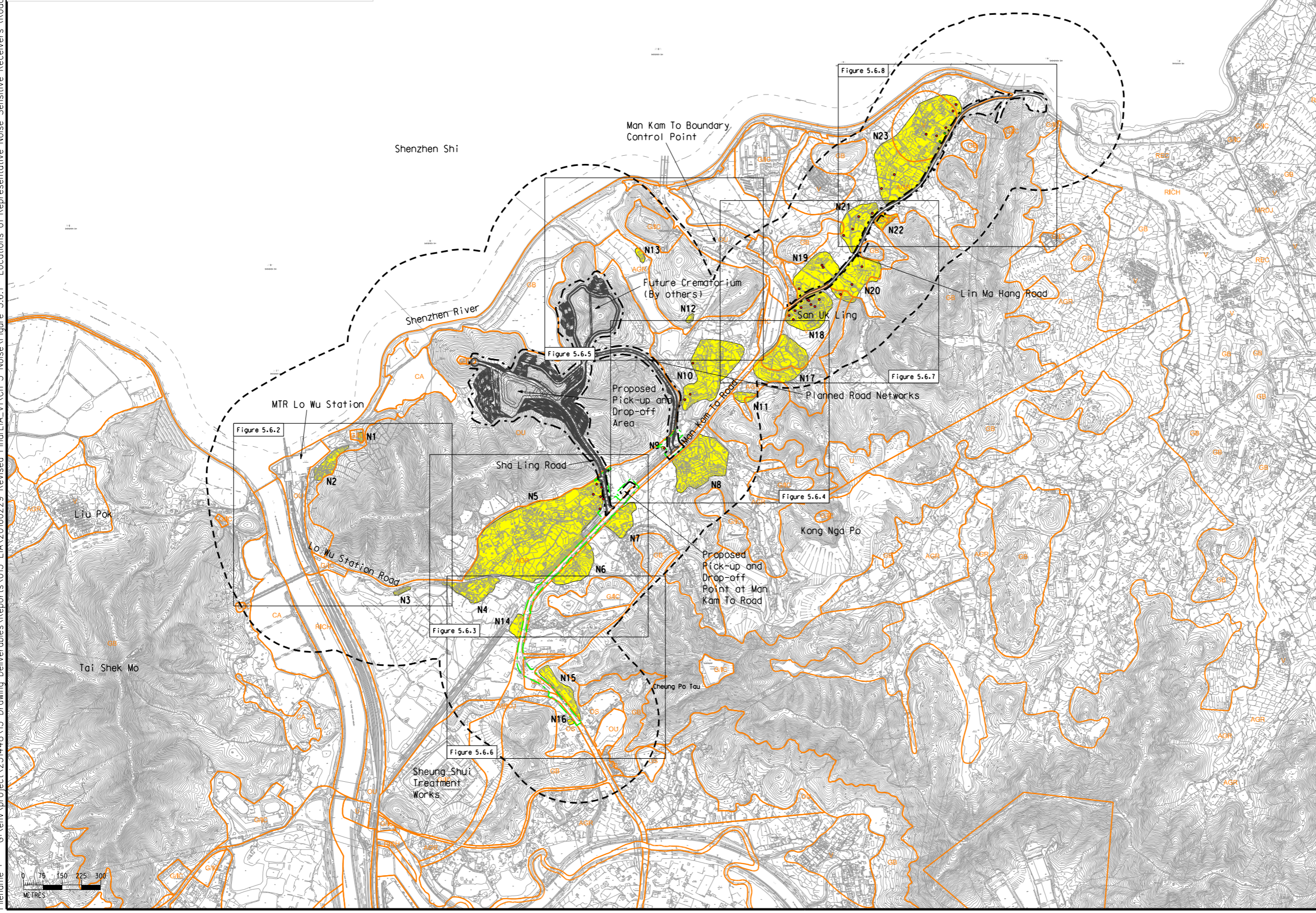


Printed by : 2/29/2016  
 Filename : G:\env\project\231448\13 Drawing Deliverables\Reports\015 EIA\20160229 Revised Final EIA\_v1\Ch 5 Noise\Figure 5.6.1 - Locations of Representative Noise Sensitive Receivers (Road Traffic Noise) (Sheet 1 of 8).dgn

No.	NSR <sup>[1], [2]</sup>	Uses <sup>[3]</sup>	No. of Storey
N5	Village houses to the west of Sha Ling Road	R	1-3
N9	Village house to the north of Man Kam To Road	R	2
N10	Village houses to the east of Sha Ling Road	R	1-3
N18	Village houses near San Uk Ling	R	1-3
N19	Village houses opposite to San Uk Ling	R	1-2
N20	Village houses to the northeast of San Uk Ling	R	1-2
N21	Village houses of Muk Wu	R	1-2
N23	Village houses of Muk Wu Nga Yiu <sup>[4]</sup>	R	1-3

Note:  
 [1] The assessment will only include NSRs which rely on opened windows for ventilation.  
 [2] The first layer of NSRs which are most affected by the project within 300m from project boundary is included.  
 [3] R – Residential Premises  
 [4] Planned NSRs are assigned within the "V" zone in N23.



**Legend**

- Project Boundary
- Utilities Construction
- 300m Assessment Area
- Area with Representative Noise Sensitive Use
- Representative Noise Sensitive Receivers (Existing)
- Representative Noise Sensitive Receivers (Planned)

**Outline Zoning Plan**  
 (Ref: Fu Tei Au & Sha Ling OZP (S/NE-FTA/14) and Man Kam To OZP (S/NE-MKT/1) & (S/NE-MKT/2))

- Agriculture
- Conservation Area
- Government/ Institution/ Community
- Green Belt
- Other Specified Used
- Open Storage
- Undetermined
- Village Type Development
- Road

Rev	Description	By	Date
G	SEVENTH ISSUE	GL	02/16
F	SIXTH ISSUE	GL	01/16
E	FIFTH ISSUE	GL	12/15
D	FOURTH ISSUE	GL	10/15

Rev	Description	By	Date
G	SEVENTH ISSUE	GL	02/16
F	SIXTH ISSUE	GL	01/16
E	FIFTH ISSUE	GL	12/15
D	FOURTH ISSUE	GL	10/15

Consultant

## ARUP

Contract No. and Title:  
 Agreement No. CE 1/2013(CE)  
 Site Formation and Associated Infrastructural Works for Development of Columbarium, Crematorium and Related Facilities at Sandy Ridge Cemetery - Design and Construction

Drawing title  
**Locations of Representative Noise Sensitive Receivers (Road Traffic Noise) (Sheet 1 of 8)**

Drawing no. **Figure 5.6.1** Rev. **G**

Drawn	Date	Checked	Approved
GL	02/16	EL	ST
Scale	AS SHOWN		Status
			PRELIMINARY

COPYRIGHT RESERVED

土木工程拓展署  
 Civil Engineering and Development Department